

Pipeline - Equipment

Eigenschaften

- Connector* produced specifically for air handling systems, for fast and flexible installation in walls and ceilings
- multifunktionale and modular design ensures time savings for the installation in-situ concrete or filigree ceilings, wooden stand, etc.
- fast and functional processing without special tools Spezialwerkzeug
- light weight, high stiffness
- based on environmentally friendly material (HDPE) and use of hygienic, safe new material odorless
- by anti-static nature of minimal dust deposits
- tested - no measurable concentration of pollutants in the air
- hygienic conditions, according to german VDI 6022

Special attachments to the basic element for:

- direct installation in the floor, concrete floor, suspended ceilings, wood-frame wall and ceiling
- with covers to prevent ingress of dirt during construction.
- Air-tightness after DIN EN 1610 for the use of special seals on the tubing connections
- Reducing the use of various flex-tube diameter

* **Utility model protection**

Components

- Body: basic element with valve port NW 125 and 2 connections for flex pipe DN 75, Multi-functional installation possible by:
 - Built-in part briefly: the fitting is to be concreted in-situ concrete or filigree ceilings. NW 125 / 135 caps optional. Labeling for valve side or port side of the base element.
 - Installation of long: The insert is for renovation, refurbishment, installation in the floor, on rough concrete ceilings and / or wall area. NW 125, L u003d 200mm. Labeling for valve side or port side of the base element. Recommendation for the outside diameter of the core hole NW 160 mm
- Reducer: The reducer for INNO-Flex tube NW 75 to NW 63, grooves for holding the seal, as a support cone on the tube side. Also suitable for use in false ceilings and wall stand.

Connections

- quick and easy installation with click connectors
- airtight by the use of sealing rings
- short installation time
- annoying Shortening the pipes is eliminated
- safe installation, as it is completely avoided by the use of HDPE material sparks

Assembly

In the manufacture of filigree ceiling, the short installation parts are cast already. By the caps pollution is avoided completely.



Pipeline - Equipment

Installation instructions

There are built-in markings available. A simple click of the base element to the cast-in part, the connection between by simply clicking the fundamental element to the cast-in part, the connection between the built part (valve) and flexible pipe is provided. For installation on the bare concrete floor, or rehabilitation, the long internal components (L = 200mm) can be used.

These can also be mounted in the attachment area of walls. In Holzständerbau, the basic element can be used without installing extensions. For a very low ceiling / wall paneling is necessary to guarantee the tightness of the valves.

The basic element is clipped on the insert. On the flex hose is inserted into the second groove, a sealing ring. We recommend that the concrete, an additional safety assurance by adhesive or cold shrinking tape.

Mounting surface element

After inserting the flex hose into the basic and fundamental element tube element may be secured with a hole band. When used in the wall, only the base is used. Here, possibly with the use of certain valves, the use of built-in rings or a shift in the rubber seal may be necessary. The basic element is provided with a cap NW 75, it is to be secured when installed with adhesive tape or cold shrinking tape. Designed for higher volumes of air at the valve will be removed and replaced by a second hose connection.

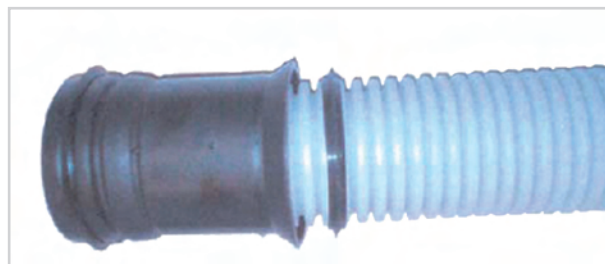
Reduction

- It is possible, the basic element to complement the multifunctional use, with a reduction.

This allows the tube diameter handle NW 63/52. The seal and connection is made by means of a sealing ring.
- On Reducing an expansion is appropriate. This simplifies the insertion of the flexible tube while preventing a tilting of the reduced cable in the base element.

Note: Different tube dimensions should not be built mixed.

Note: The multi-functional connector with accessories is protected in its type, design and functionality of a utility model.



Ordering information

Port-base element with spigot NW 125 and 2 connections, NW 75, with 1 stopper
L x W x H = 250 x 195 x 84mm, 25mm socket



AST 75 / 125 Art.-Nr. 2.010

Built-in part with short pipe socket NW 125
L ~ 78mm, D¹ inside 125mm - D² outside 155 mm



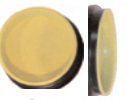
EBT-K 125-K Art.-Nr. 2.011

Built-in part with long pipe socket NW 125
L - 200mm, D¹ inside 125mm - D² outside 155 mm



EBT-L 125-L Art.-Nr. 2.012

pipe cap NW 125 valve side page D¹ inside 125mm
pipe cap NW 135 connection side D¹ inside 135 mm



RK 125 - V Art.-Nr. 2.013
RK 135 - A Art.-Nr. 2.014

Reducing 75/63, L - 117 mm



RS 75/63 Art.-Nr. 2.015